
THE
WEALTH OF NATIONS



Bruce Linn



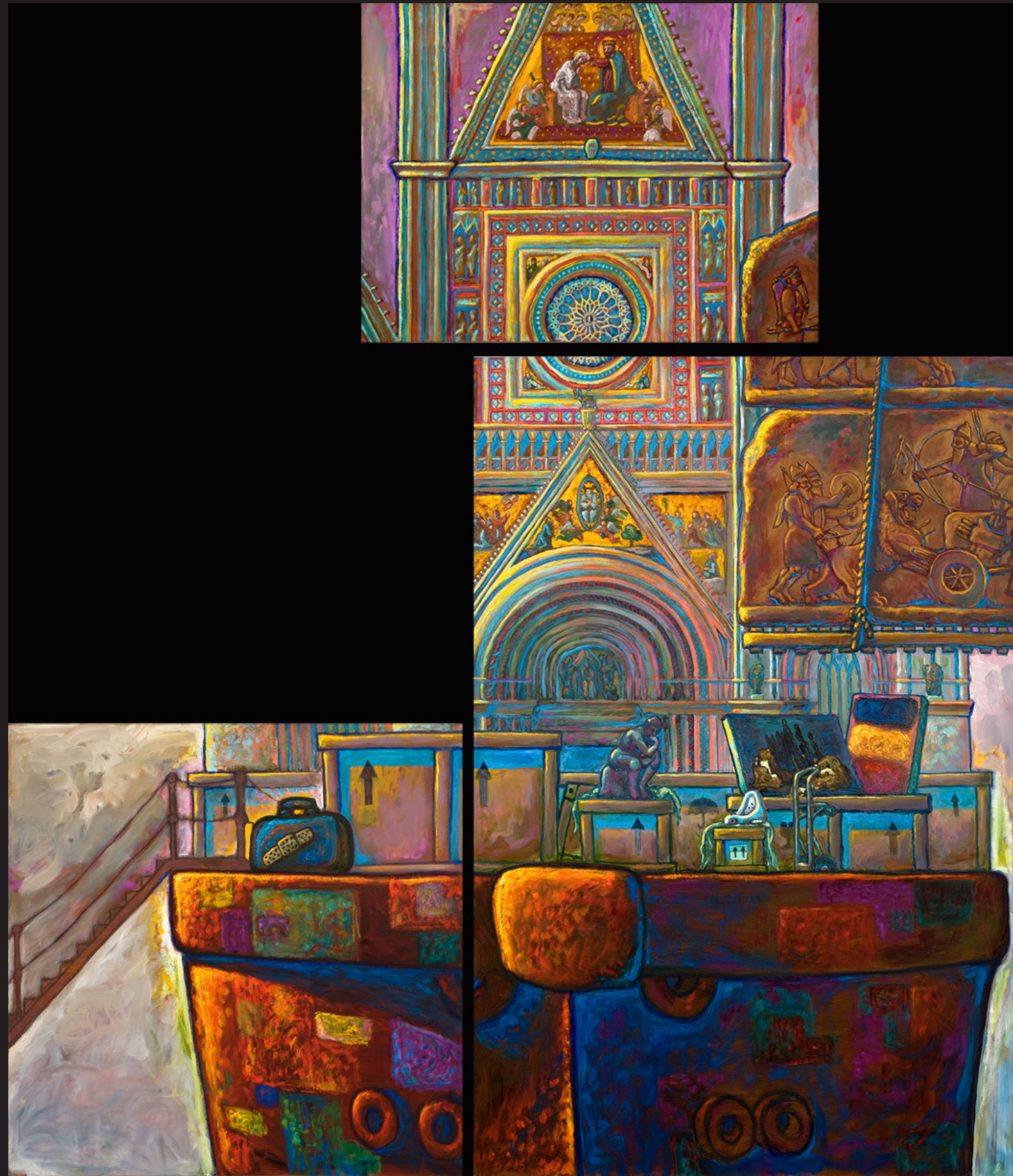
1. Cathedral Ark, 2011, oil & china marker on canvas, 60 x 48 in.

Bruce Linn



2. Chrysler Building Ark, 2011, oil & china marker on canvas, 60 x 36 in.

Bruce Linn



3. Orvieto Duomo Ark Composition, 2011, oil & china marker on canvas, (three canvases) 104 x 90 in.

Bruce Linn



4. Orvieto Duomo Ark Composition (DETAIL - Suitcase), 2011, oil & china marker on canvas, 40 x 40 in.



5. Dumpster, Suitcase, Remus & Romulus, & Ark, 2010, oil & china marker on canvas, 48 x 60 in.

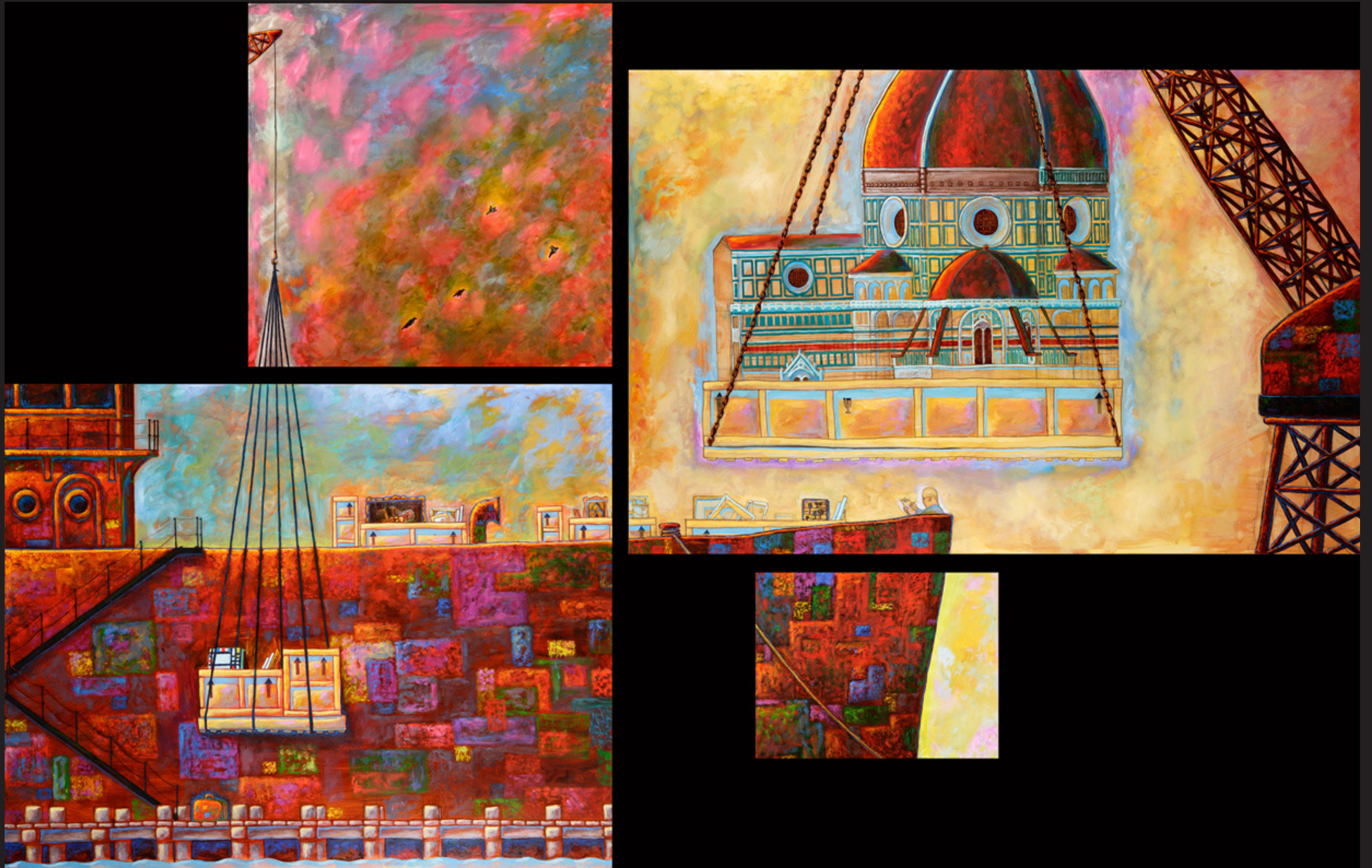
Bruce Linn



6. Landfill (Feeding the Philistines), 2010, oil, graphite & china marker on canvas, 48 x 60 in.



7. Ark, 2009, oil & china marker on canvas, 48 x 72 in.



8. Florentine Duomo & Ark Composition, 2009, oil & china marker on canvas, (four canvases) 87 x 138 in.



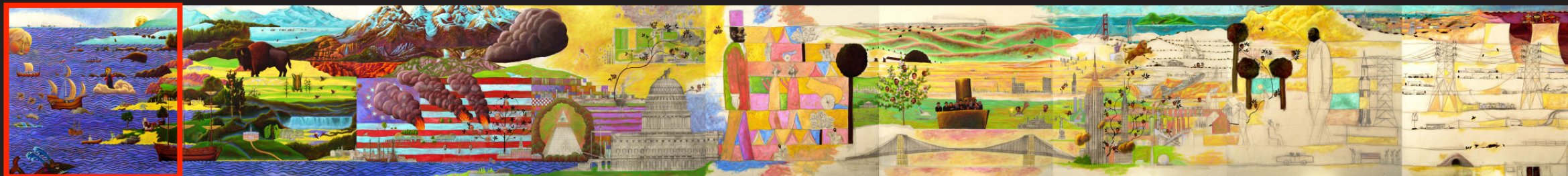
9. Florentine Duomo & Ark Composition (DETAIL - Part C – Duomo), 2009, oil & china marker on canvas, 48 x 72 in.



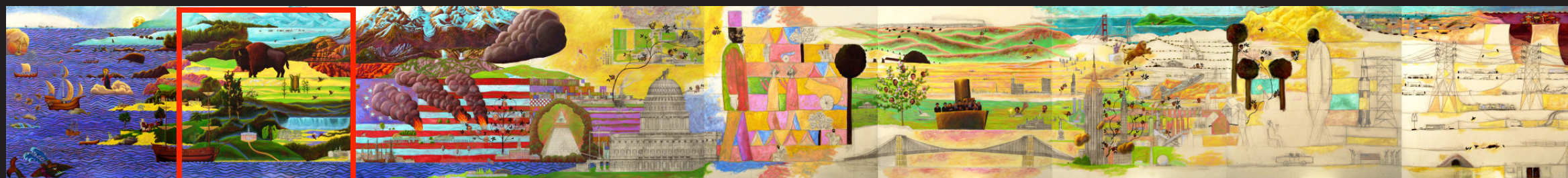
10. The Author (Between Hope & Fear), 2009, oil & graphite on canvas, 48 x 72 in.



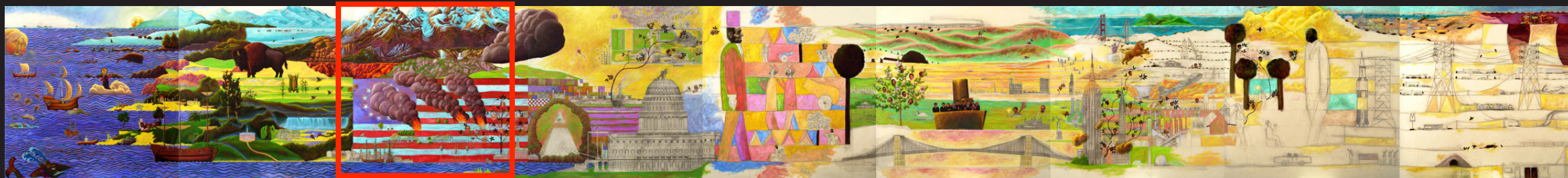
11. Building America, 2001, oil and graphite on canvas, 6 x 54 ft. (nine six-by-six-foot canvases)



12. Building America, Age of Discovery (Panel 1 of 9), 2001, oil and graphite on canvas, 72 x 72 in.



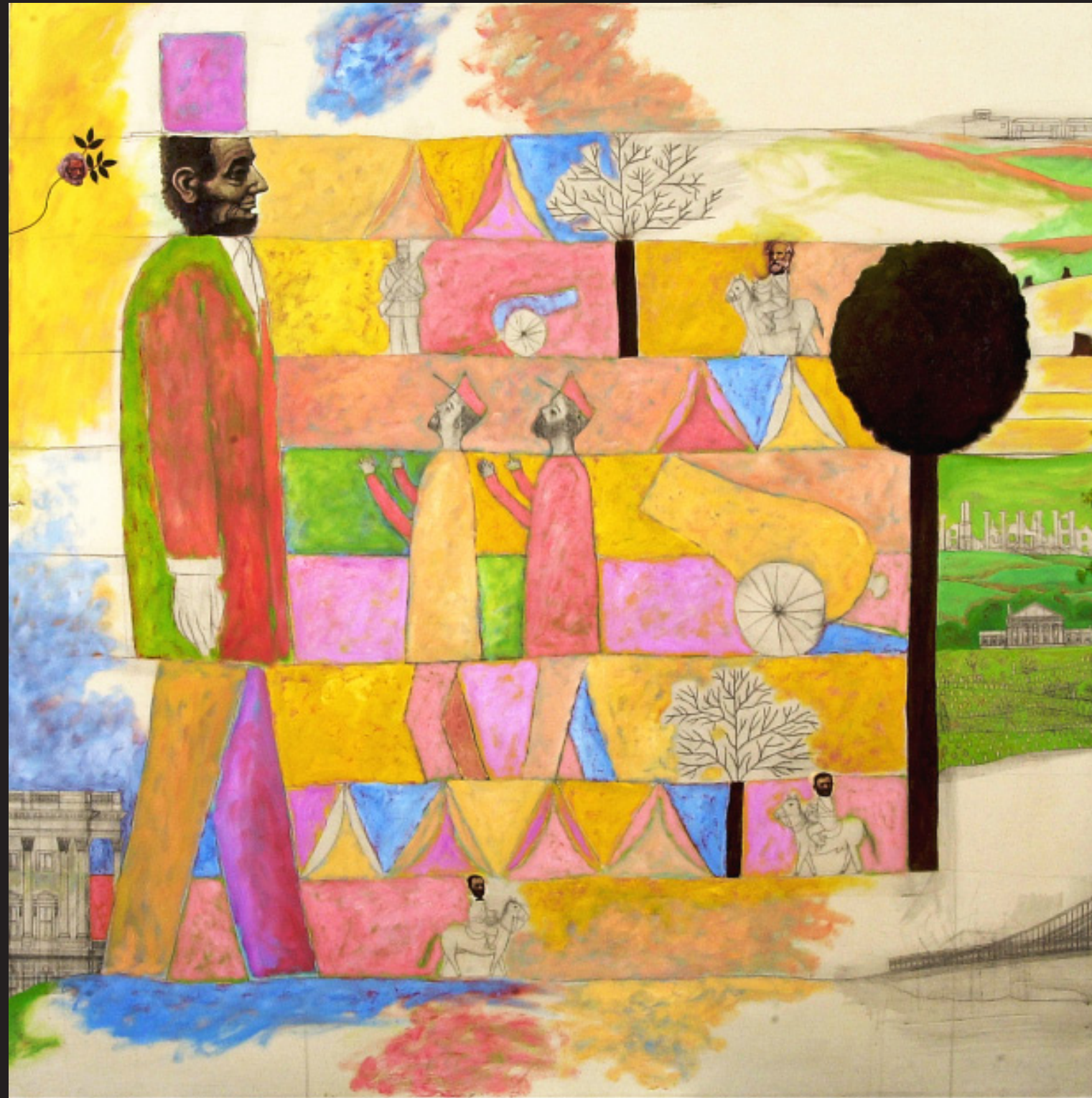
13. Building America, Colonial Period (Panel 2 of 9), 2001, oil and graphite on canvas, 72 x 72 in.



14. Building America, Revolutionary Period (Panel 3 of 9), 2001, oil and graphite on canvas, 72 x 72 in.

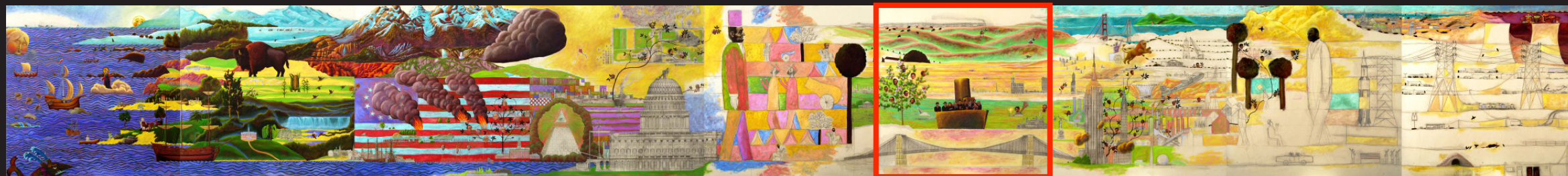


15. Building America, Ante-Bellum Period (Panel 4 of 9), 2001, oil and graphite on canvas, 72 x 72 in.

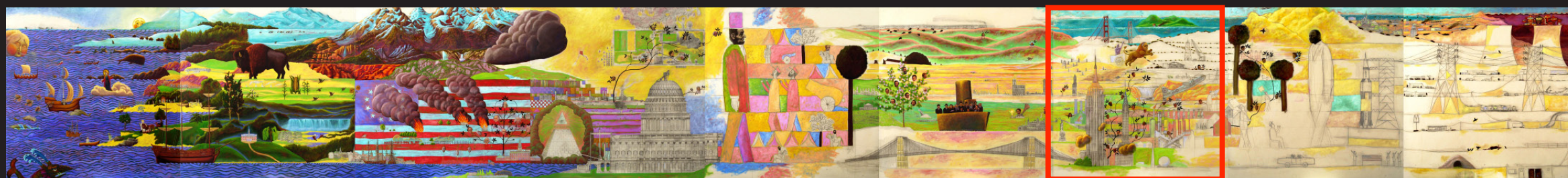


16 Building America, Civil War (Panel 5 of 9), 2001, oil and graphite on canvas, 72 x 72 in.

Bruce Linn



17. Building America, Late-19th Century (Panel 6 of 9), 2001, oil and graphite on canvas, 72 x 72 in.



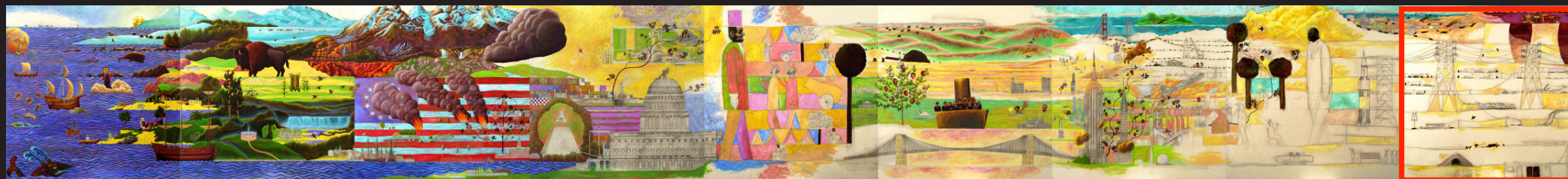
18. Building America, Early-20th Century (Panel 7 of 9), 2001, oil and graphite on canvas, 72 x 72 in.

Bruce Linn



19. Building America, Mid-20th Century (Panel 8 of 9), 2001, oil and graphite on canvas, 72 x 72 in.

Bruce Linn



20. Building America, Late-20th Century (Panel 9 of 9), 2001, oil and graphite on canvas, 72 x 72 in.